

RTM Module for WOLF VPX with Multiple Inputs and Outputs

OVERVIEW

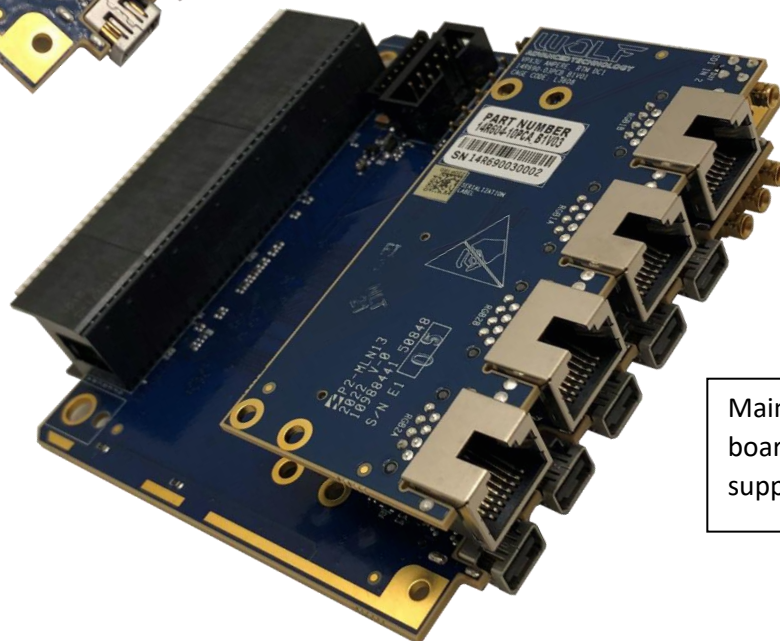
The VPX3U-RTM-VIO module is compatible with WOLF 3U VPX WOLF-1448 and WOLF-1538 modules, providing multiple outputs for these modules. It can also include an optional daughterboard for additional I/O options for MCOTS products.

The main board includes 5 video outputs suitable for DP/HDMI/DVI output, 2 SDI outputs and 1 SDI input.

A daughter board can provide an additional 1 SDI input and 4 analog outputs using discrete BNC RGB connectors or RGB over a network connection. For other video I/O options contact WOLF.

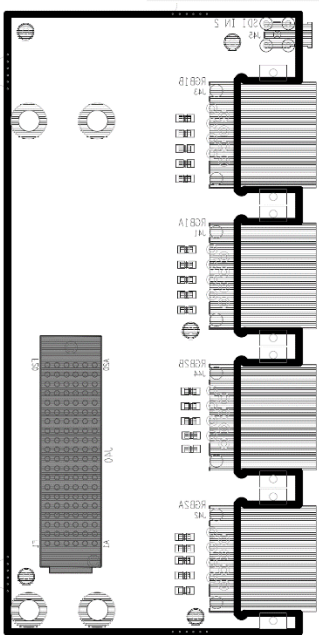
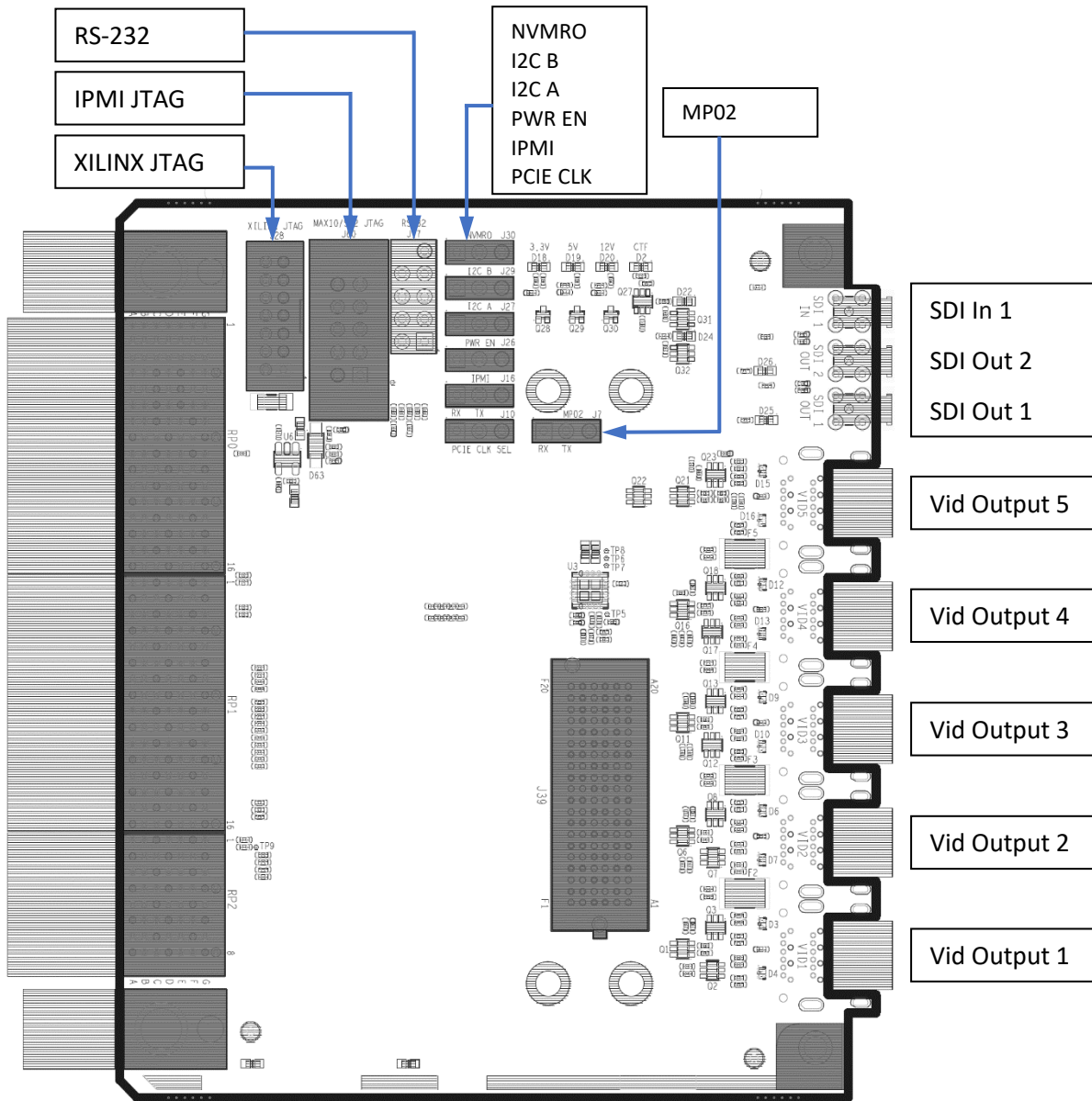


Standard main board, supports WOLF-1448 and WOLF-1538

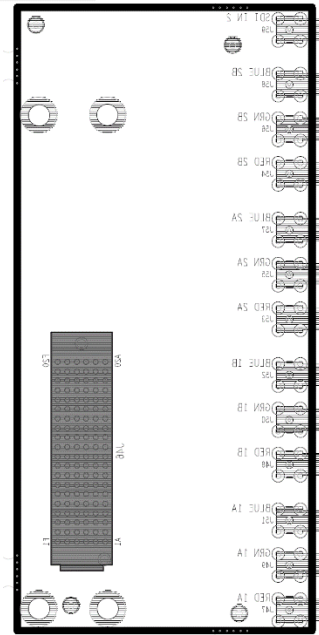


Main board with daughter board, for MCOTS product support

VPX3U-RTM-VIO



- SDI In 2
- RGB B2
- RGB A2
- RGB B1
- RGB A1



- SDI In 2
- RGB B2
- RGB A2
- RGB B1
- RGB A1